



# SeRi FLY 2.5b or above

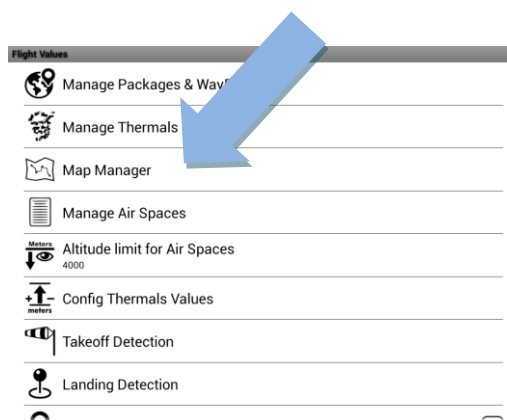
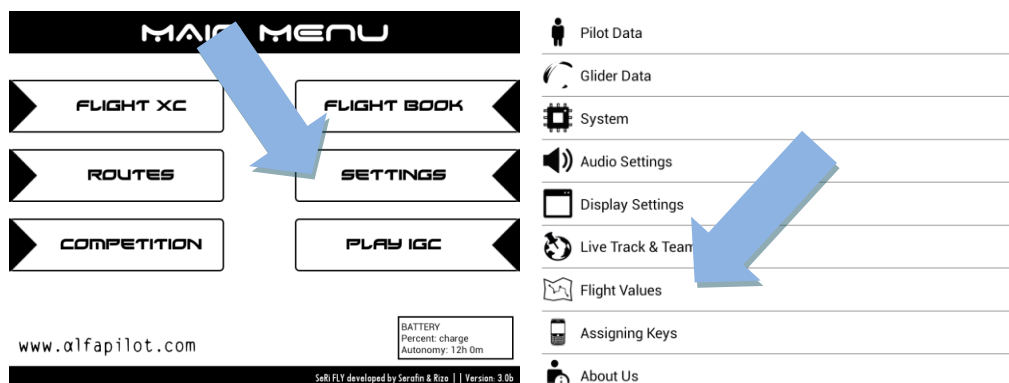
## Quick guide Maps

Versión 1.0 |ENG|

2017-03-15

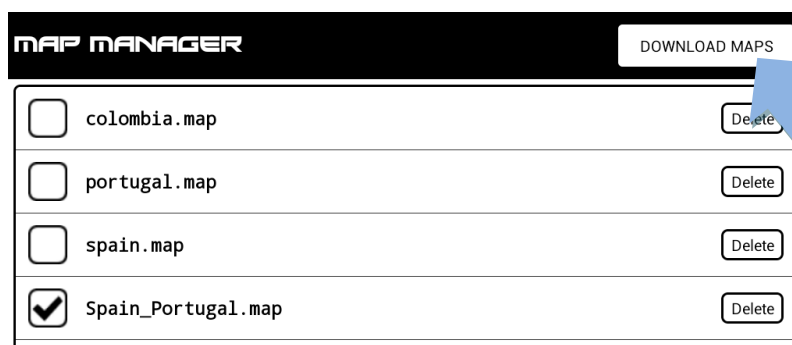
First we must have the maps and activate them, for this we perform the following steps:

In Main Menu Select Settings -> Flight values -> Map Manager:



In Map Manager, will show the list of maps that are already in the system, allowing to activate or deactivate them (In border areas we can activate two maps at the same time, for more coverage).

To add maps, we have the option of "Download maps" (WIFI internet connection required). With this option we can download the maps directly in our device. If the download is interrupted the file will not be removed for can resume after.



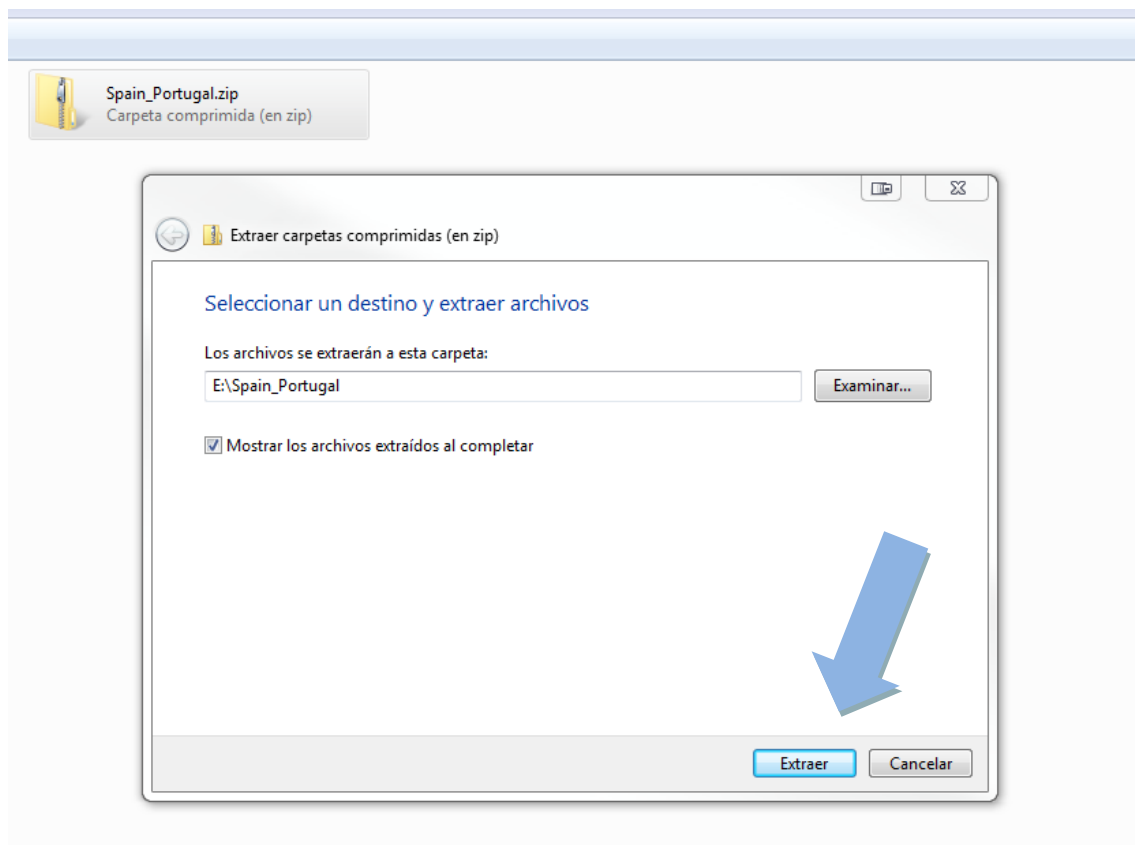
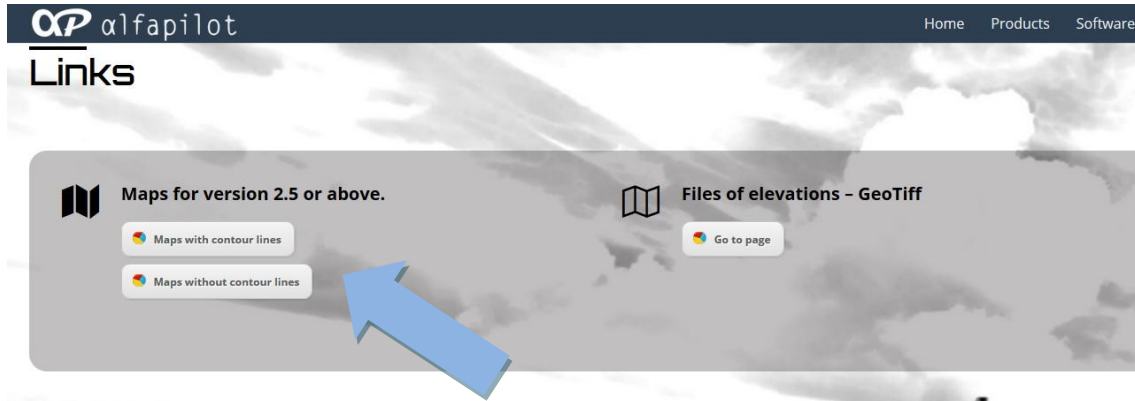
Another option to add maps, is to download them on the PC and transfer them to our Alfapilot. To do this, we will perform the following steps:

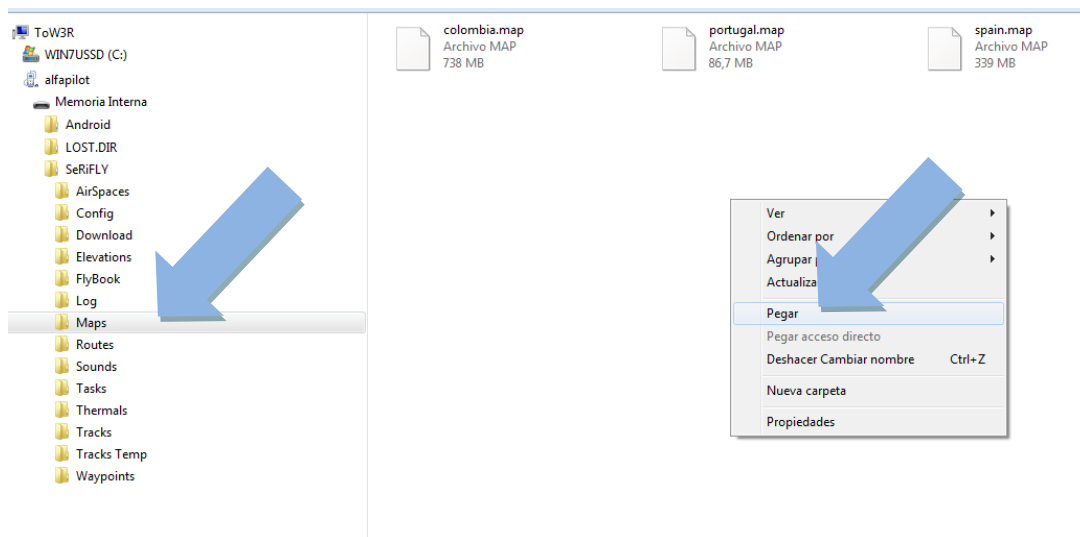
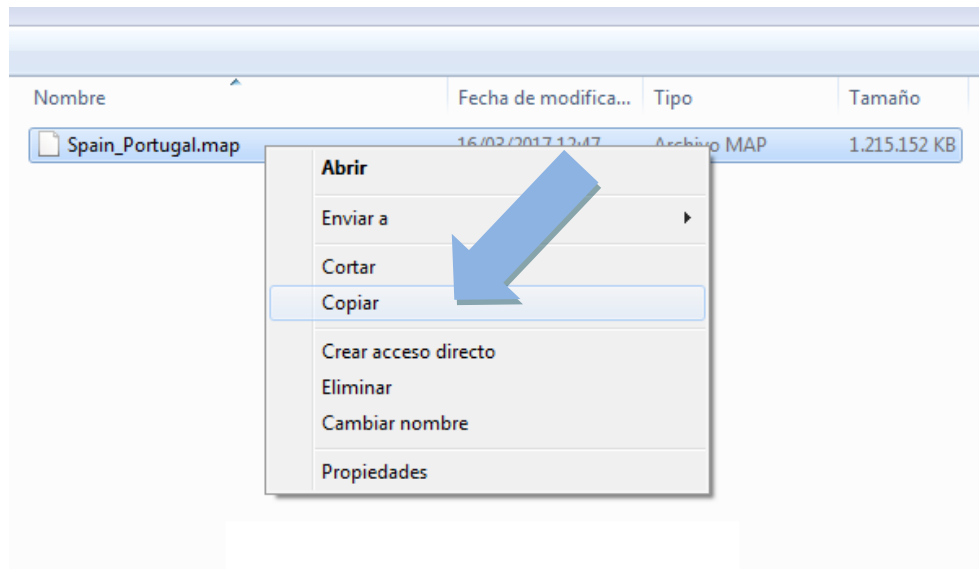
-> Let's go to the support website Alfapilot (<http://www.alfapilot.com/en/support/>)

-> Select the link to download the map.

-> Once downloaded the map, if it comes in a compressed file .Zip we unzip it.

-> Copy the file ".map" to our alfapilot in a folder "../serifly/maps/"



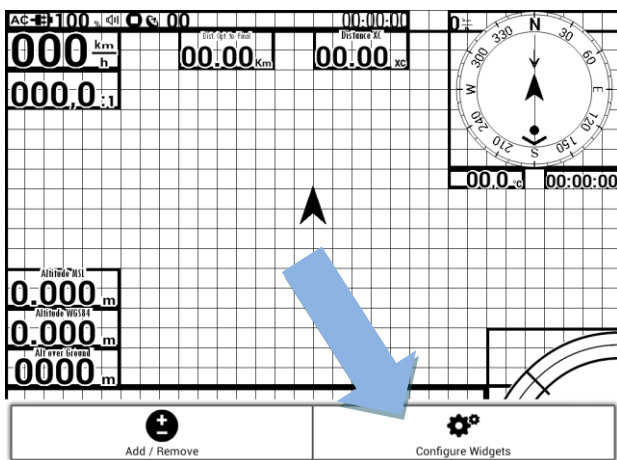
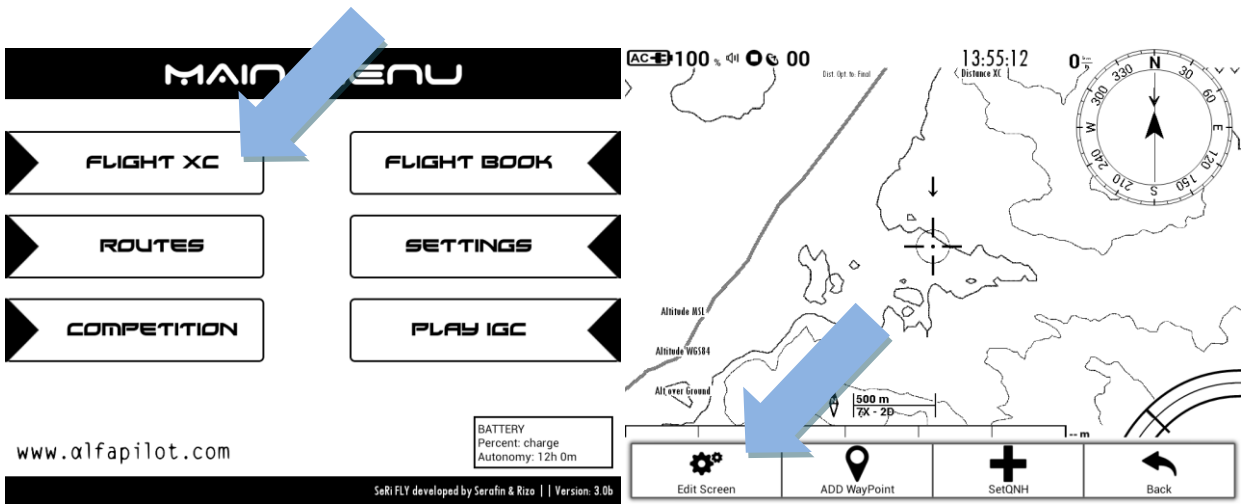


Once the maps are activated, We must configure our Maps Widgets to show them. Each Map Widget is independent of the others, this means that we can configure with different options.

For example in the First screen of "Flight XC" we can activate "Show Towns and roads", in the second screen of "Flight XC" we can activate "Show Contour Lines", and in the Third screen of "Flight XC" we can activate both, or none.

To access these settings:

- > Select a flight mode
- > Menu Button "Edit Screen"
- > Menu Button "Configure Widgets"
- > Select "Navigation Map in ..."
- > We activate or deactivate the options to our liking.



- Hum. Relative
- Hum. Absolute
- Temp. Condensation
- Altitude Base Cloud
- Navigation**
- Navigation Map in Flight XC
- Air Spaces
- Compass Navigation
- Distance Flight XC

**Navigation Map in Flight XC**

- Show Border
- Show Map (Roads, Town...)
- Show Contour Lines
- Show Flight XC Path
- Show Assistant Triangles FAI/FLAT
- Show Team Pilots
- Orientation  
North Up
- Show Air Spaces